

# MONTHLY MEMBERSHIP PROGRESS REPORT

District 325B2

Results as of: 12/31/2019

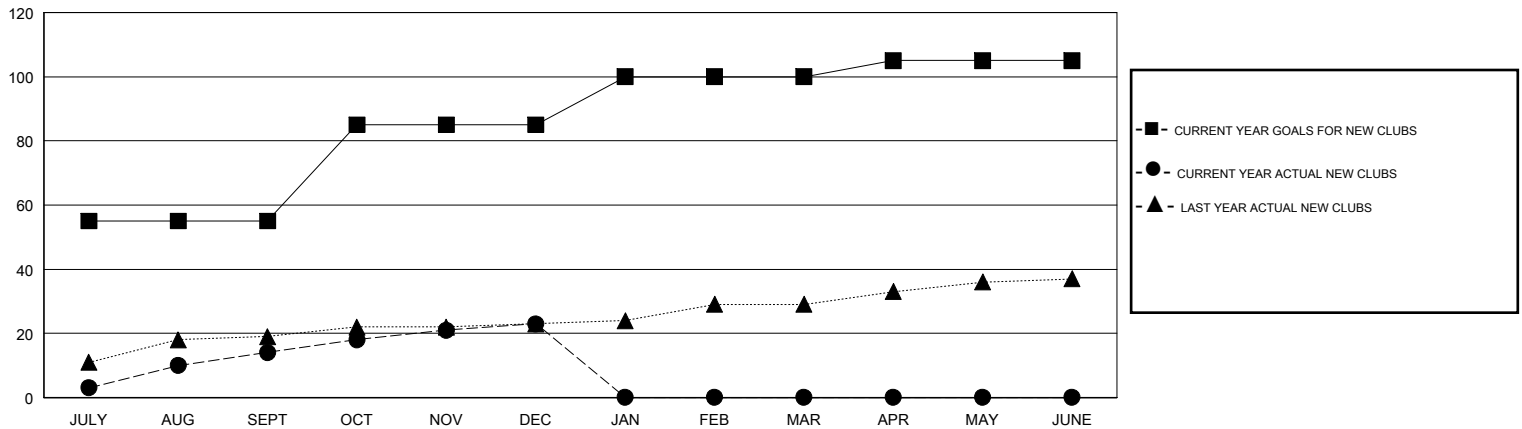
GMT:

LOCATION NEPAL

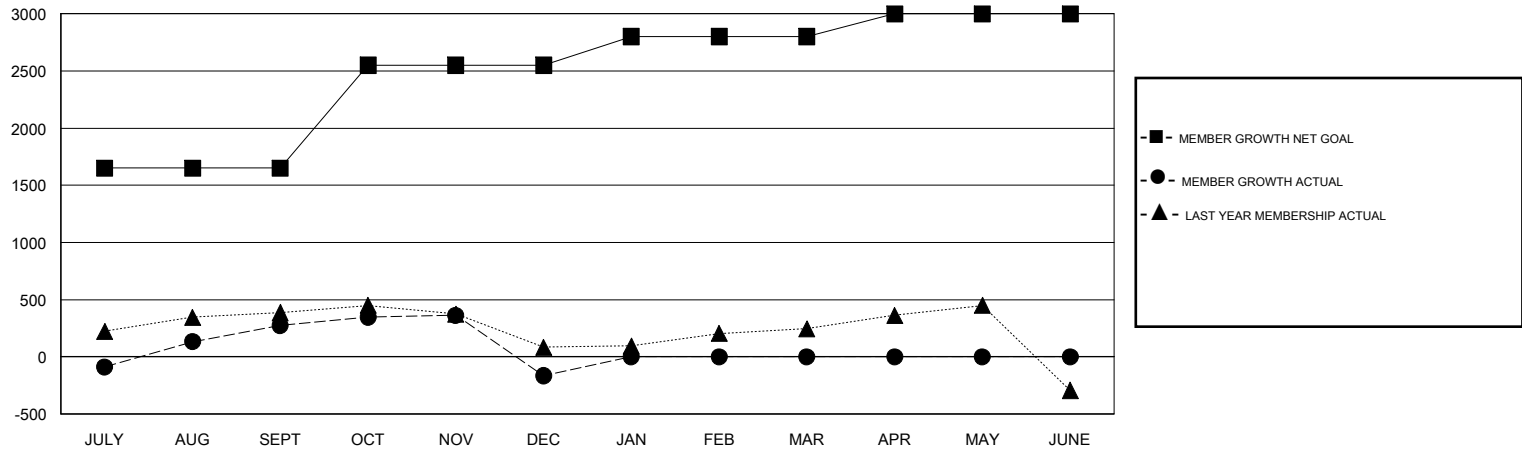
GMT CA

| Clubs                 |               |           |               | Members               |                        |                      |  |
|-----------------------|---------------|-----------|---------------|-----------------------|------------------------|----------------------|--|
| RESULTS FOR 2019-2020 |               |           |               | RESULTS FOR 2019-2020 |                        |                      |  |
| QUARTER               | NEW CLUB GOAL | NEW CLUBS | DROPPED CLUBS | QUARTER               | MEMBER GROWTH NET GOAL | MEMBER GROWTH ACTUAL | DROPPED MEMBERS ACTUAL (including transfers) |
| JULY/AUG/SEPT         | 55            | 14        | 3             | JULY/AUG/SEPT         | 1650                   | 540                  | 257  |
| OCT/NOV/DEC           | 30            | 9         | 19            | OCT/NOV/DEC           | 900                    | 307                  | 741  |
| JAN/FEB/MAR           | 15            | 0         | 0             | JAN/FEB/MAR           | 250                    | 0                    | 0  |
| APR/MAY/JUNE          | 5             | 0         | 0             | APR/MAY/JUNE          | 200                    | 0                    | 0  |

GOALS AND ACTUAL NEW CLUBS CUMULATIVE



GOALS AND ACTUAL MEMBERS CUMULATIVE



|                        |   |                                       |
|------------------------|---|---------------------------------------|
| DROPPED CLUBS: 22      | 105 CLUBS OF 392 ADDED 1 OR MORE NEW MEMBERS              | <b>GENDER DISTRIBUTION</b>            |
|                        |   | MALE 6,451 (73.74%)                   |
|                        |   | FEMALE 2,297 (26.26%)                 |
| <b>DROPPED MEMBERS</b> | <a href="#">CLICK HERE FOR CUMULATIVE MEMBERSHIP DATA</a> | TOTAL FAMILY UNIT MEMBERS 4,837       |
| DECEASED 2             |   | FAMILY MEMBERS PAYING HALF DUES 2,848 |
| CLUB CANCELLED 343     |   |                                       |
| OTHER 653              |   |                                       |
| <b>TOTAL 998</b>       |   |                                       |